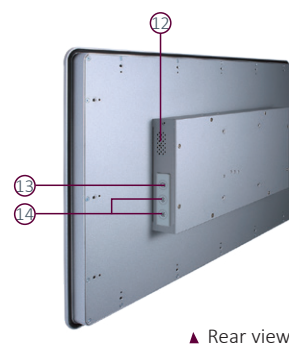
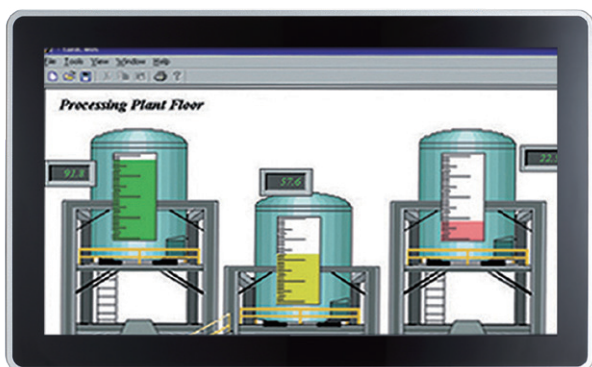
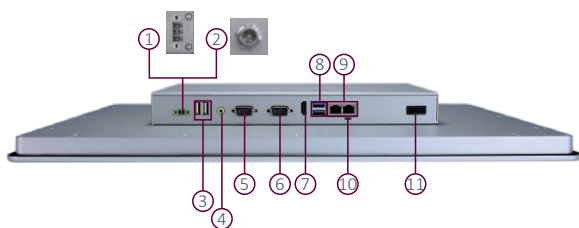


# GOT3217WL-845-PCT

21.5" FHD TFT Multi-touch Panel Computer with Intel® Pentium® Processor N3710



▲ Rear view



1. Terminal block for DC power input or screw w/ AC power adapter
2. Terminal block
3. 2 x USB 2.0
4. 1 x Line-out
5. 1 x RS-232/422/485
6. 1 x RS-232
7. 1 x HDMI
8. 2 x USB 3.0
9. 2 x LAN
10. AT/ATX selectable switch
11. Power Switch (ATX)
12. Speakers
13. Backlight switch
14. Brightness adjust +/-



Fanless



Low Power



Wide Temp.



DDR3L



AiRD



IP65



USB 3.0



Dual-View

## Features

- 21.5" FHD 10-point multi-touch projected capacitive widescreen
- Fanless design with Intel® Pentium® processor N3710
- 2.5" SATA HDD and mSATA
- 3G, WLAN module and antennas (optional)
- 2 GbE LANs, 2 USB 3.0, 2 USB 2.0 and 2 COM
- IP65-rated aluminum front bezel
- Supports panel mount and optional VESA arm/desktop stand/wall mount
- Adjustable RS-232/422/485 setting via BIOS

## Introduction

The GOT3217WL-845-PCT adopts a 21.5-inch FHD LCD and supports low power Intel® Pentium® processor N3710. It also provides two PCI Express Mini card slots for 3G, wireless network connectivity. This 21.5" multi-touch panel computer is suitable for transportation, heavy-duty industry, smart factory automation, and oil pipe monitoring systems.

### 21.5-inch FHD LCD with Projected Capacitive Multi-touch

The 21.5" FHD touch panel PC has a 21.5-inch FHD TFT LCD display with a 10-point multitouch screen and 250 nits of brightness. The hardness of touch glass surface is up to 7h for anti-scratch purpose.

### WLAN Antenna Supported (optional)

The GOT3217WL-845-PCT provides two PCI Express Mini card slots and WLAN antennas for 4G and wireless network connectivity.



## Specifications

Front Bezel	IP65 front bezel	
LCD Panel	Display Type	21.5" FHD TFT LCD
	Brightness (cd/m <sup>2</sup> )	250 nits
	Resolution	1920 x 1080
Main System	CPU	Intel® Pentium® processor N3710 4C @ 1.6 GHz (Braswell)
	Chipset	SoC Integrated
	System Memory	1 x 204-pin DDR3L-1600 SO-DIMM, up to 8GB
	BIOS	AMI UEFI BIOS
	Storage	1 x 2.5" SATA HDD (9.5 mm height) 1 x mSATA
	Watchdog Timer	255 levels, 0 to 255 sec.
	Onboard Graphics	Integrated Intel® HD Graphics
I/O Connector	1 x RS-232 1 x RS-232/422/485 1 x Switch for power on/off (ATX) 1 x Audio (Line-out) 2 x USB 3.0 2 x USB 2.0 2 x 10/100/1000 Mbps Ethernet (Intel® I210-AT)	
TPM	N/A	
Expansion Interface	1 x full-size PCI Express Mini Card slot with mSATA 1 x full-size PCI Express Mini Card slot with SIM	
Touchscreen	10-point projected capacitive multi-touch	
Power Supply	AC version: 12 VDC 60W adapter	
Power Consumption	48 W	
Dimensions (W x D x H)	547.6 x 57.6 x 339 mm (21.56" x 2.27" x 13.35")	
Packing Dimensions (W x D x H)	730 x 215 x 555 mm (28.74" x 8.46" x 21.85")	
Weight (net/gross)	7.6 kg (16.8 lb)/10.5 kg (23.1 lb)	
Operating Temperature	0°C to +50°C (+32°F to +122°F)	
Relative Humidity	20% to 90% @ +40°C; non-condensing	
Operation Vibration	1G, 10 to 500 Hz, random for 2.5" SATA HDD	
Certificate	CE	

## Ordering Information

GOT3217WL-845-PCT-J (P/N: E223217101)	21.5" FHD TFT fanless touch panel computer with Intel® Pentium® N3710 1.6 GHz quad-core processor, 10-point projected capacitive multi-touch screen and AC-DC 12 VDC power adapter (screw type connector)
--	---

\* Other configuration by request

\* Specification and certifications are based on requirements and may vary.

## Packing List

1 x GOT3217WL-845-PCT  
1 x Adapter  
1 x Panel mount kit



## Optional Accessories

4G LTE kit

Wi-Fi kit

E29R131114 Wall mount kit

50966224010E Adaptor 24V/120W, wire only, FSP120-AAAN3 (for DC model)

## Optional EOS Installation

Windows® 11 IoT Enterprise

Windows® 10 IoT Enterprise

## Optional OS Installation

Windows® 11

Windows® 10

## Dimensions

