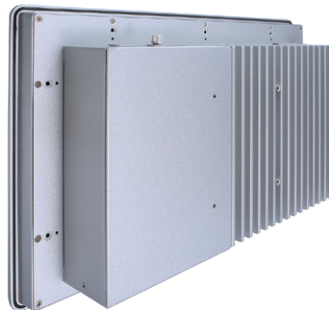
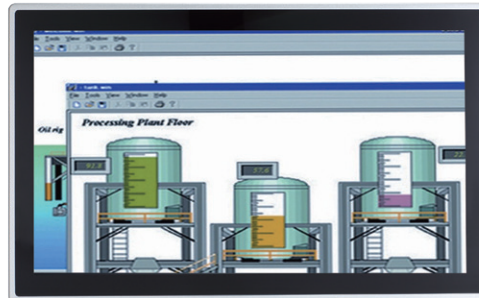
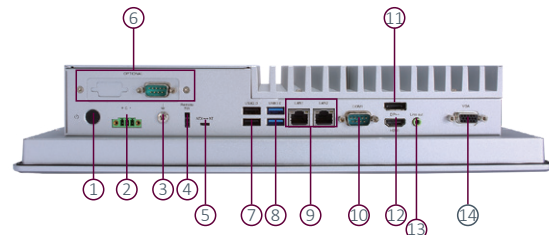


GOT315W-521

15.6" WXGA TFT Multi-touch Panel Computer with LGA1151 9th/8th Gen Intel® Core™ i7/i5/i3, Intel® Pentium® Gold or Intel® Celeron® Processor (up to 35W)



▲ Rear view



- | | |
|--|--------------------------------|
| 1. Power button | 8. 2 x USB 3.0 |
| 2. Phoenix small-type connector | 9. 2 x LAN |
| 3. Grounding hole | 10. 1 x COM for RS-232/422/485 |
| 4. Remote power switch | 11. 1 x DisplayPort |
| 5. AT/ATX switch | 12. 1 x HDMI |
| 6. Optional flexible I/O (default 1 x RS-232) | 13. 1 x Line-out |
| 7. 2 x USB 2.0 | 14. 1 x VGA |



Features

- 15.6" WXGA projected capacitive multi-touch widescreen
- Fanless design with support for LGA1151 9th/8th gen Intel® Core™ i7/i5/i3, Intel® Pentium® Gold or Intel® Celeron® processor
- Supports WLAN module and antenna (optional)
- 2.5" SATA HDD/SSD
- 2 LAN, 4 USB, 2 COM, 1 HDMI, 1 DisplayPort, and 1 VGA
- IP65-rated aluminum front bezel
- Supports panel mount, VESA mount, and wall mount

Introduction

The GOT315W-521-PCT is a multi-touch fanless panel PC featuring a 15.6-inch WXGA LCD display. It supports LGA1151 9th/8th gen Intel® Core™ i7/i5/i3, Intel® Pentium® Gold, or Intel® Celeron® processors (up to 35W). The system offers M.2 Key E and PCI Express Mini Card slots for add-on devices, such as Wi-Fi modules, making it ideal for factory automation and oil pipeline monitoring systems.

15.6-inch WXGA LCD with Projected Capacitive Multi-touch

The GOT315W-521-PCT offers 400 nits of brightness and displays content in HD resolution. Its projected capacitive multi-touch screen enables more direct and user-friendly operation. Additionally, the touch glass surface features up to 7H hardness for enhanced scratch resistance.



Specifications

| | | |
|--------------------------------|--|--|
| Front Bezel | IP65 front bezel | |
| LCD Panel | Display Type | 15.6" WXGA TFT LCD |
| | Brightness (cd/m ²) | 400 nits |
| | Resolution | 1366 x 768 |
| Main System | CPU | LGA1151 9th/8th gen Intel® Core™ i7/i5/i3, Intel® Pentium® Gold or Intel® Celeron® processor (up to 35W) |
| | Chipset | Intel® H310 |
| | System Memory | 1 x 260-pin DDR4-2666/2400 SO-DIMM, up to 32GB |
| | BIOS | AMI UEFI BIOS |
| | Storage | 1 x mSATA 1 x removable 2.5" SATA HDD/SSD (7 mm or 9.5 mm height) |
| | Watchdog Timer | 255 levels, 0 to 255 sec. |
| | Onboard Graphics | Intel® integrated Gfx graphic engine |
| I/O Connector | 1 x 9-pin D-sub Male for RS-232 1 x COM for RS-232/422/485 2 x RJ-45 for GbE 2 x USB 3.0 2 x USB 2.0 1 x Phoenix type connector for DC power input 1 x Switch for power on/off (ATX) 1 x Line-out 1 x HDMI 1 x DisplayPort 1 x VGA 1 x Remote power switch 1 x AT/ATX switch (DC type only) 1 x Grounding hole (DC version) | |
| TPM | TPM 2.0 | |
| Expansion Interface | 1 x full-size PCI Express Mini Card slot (PCIe + SATA + USB) 1 x M.2 Key E 2230 (for Wi-Fi) | |
| Touchscreen | Projected capacitive multi-touch | |
| Power Supply | +12V/+19V/+24VDC 1 x Terminal block | |
| Power Consumption | 70W | |
| Dimensions (W x D x H) | 396.8 x 77 x 247.1 mm (15.6" x 3.04" x 9.73") | |
| Packing Dimensions (W x D x H) | 535 x 485 x 196 mm (21.06" x 19.09" x 7.71") | |
| Weight (net/gross) | 6.5 kg (14.3 lb)/8.5 kg (18.7 lb) | |
| Operating Temperature | 0°C to +50°C (+32°F to +122°F) | |
| Relative Humidity | 20% to 90% @ +40°C; non-condensing | |
| Operation Vibration | 1G, 10- 500 Hz, random for 2.5" SATA HDD | |
| Certifications | CE, EN 61000-6-2, and EN 61000-6-4 | |

Ordering Information

| | |
|--------------------------------------|--|
| GOT315W-521-PCT-DC (P/N: E22B315105) | 15.6" WXGA TFT fanless touch panel computer with LGA1151 9th/8th gen Intel® Core™ i7/i5/i3, Intel® Pentium® Gold or Intel® Celeron® processor (up to 35W), projected capacitive multi-touch screen, and 24 VDC terminal block with small Phoenix connector |
|--------------------------------------|--|

* Other configuration by request

* Specification and certifications may vary based on different requirements

Packing List

1 x GOT315W-521
1 x Phoenix connector
1 X Panel Mount kit

Optional Accessories

4G LTE Kit

Wi-Fi kit

| | |
|--------------|---|
| E29R131114 | Wall mount kit |
| 509000001500 | Adaptor 24V/120W, wire only, FSP120-AAAN3 |
| E29R131102 | Panel mount kit |
| E392903102 | AX92903 full-size PCI Express Mini module with CAN Bus |
| E392904102 | AX92904 full-size PCI Express Mini module with 32-bit DIO |
| E392906101 | AX92906 full-size PCI Express Mini module with COM |

Optional EOS Installation

Windows® 11 IoT Enterprise

Windows® 10 IoT Enterprise

Optional OS Installation

Windows® 11

Windows® 10

Dimensions

