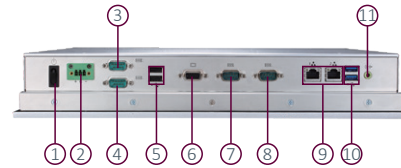
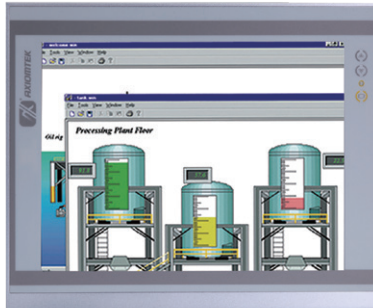
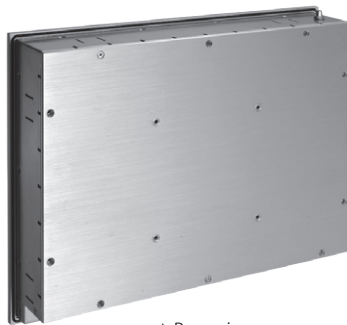


GOT3156T-834

15" XGA TFT Fanless Touch Panel Computer with Intel Atom® Processor E3827 (-20°C to +55°C)



- | | |
|---------------------------|---------------------------|
| 1. Power switch (ATX) | 7. COM 1 (RS-232/422/485) |
| 2. Power input (Phoenix) | 8. COM 2 (RS-232/422/485) |
| 3. COM 4 (RS-232/422/485) | 9. Ethernet x 2 |
| 4. COM 3 (RS-232/422/485) | 10. USB 3.0 x 2 |
| 5. USB 2.0 x 2 | 11. Audio (Line-out) |
| 6. VGA | 12. CFast™ card slot |



▲ Rear view



▲ Side view



Fanless



Wide Temp.



Low Power



Dual-View



DDR3L



AiRD



IP66



USB 3.0

Features

- 15" XGA color TFT LCD display
- Fanless cooling system with Intel Atom® processor E3827 (1.75 GHz) (Bay Trail)
- 2 Gigabit LAN, 2 USB 3.0, 2 USB 2.0 & 4 COM ports
- WLAN/3G module and antenna (optional)
- 2 Express Mini card slots
- 9 to 36 VDC wide voltage and over current protection
- Supports panel mount and optional VESA arm, desktop stand, wall mount
- 2.5" 7/9.5 mm SATA HDD & CFast™ or mSATA
- -20°C to +55°C wide temperature range
- Adjust RS-232/422/485 setting via BIOS



Introduction

The GOT3156T-834 adopts a 15-inch XGA 400 nits LCD and supports Intel® Bay Trail processor. By supporting a wide range operating temperature from -20°C to +55°C, it can be used in harsh environment. The rugged industrial panel PC supports low power Intel® Atom® processor E3827. The industrial HMI can work under 1.3G (10 to 500Hz, random for 2.5" HDD) in operation mode with a patent of anti-vibration design. It also provides two PCIe mini card slots for 3G, wireless network connectivity. The 15" fanless touch panel computer is suitable for transportation, heavy-duty industry, smart factory automation, and oil pipe monitoring systems.

Wide Temperature Range (-20°C to +55°C)

The Intel Atom®-based GOT3156T-834 applies unique extended temperature technology with wide temperature range support as well as fanless operation. It also has a compact design for harsh environment.

WLAN Antenna Supported (optional)

The 15" XGA IP65 industrial panel PC, GOT3156T-834, provides two PCIe mini card slots and WLAN/3G antennas for wireless network connectivity.

Specifications

Front Bezel	IP65, NEMA 4 rugged protection, aluminum front bezel	
LCD Panel	Display Type	15" XGA TFT LCD
	Brightness (cd/m ²)	400 nits
	Resolution	1024 x 768
Main System	CPU	Intel Atom® processor E3827 2C @1.75 GHz (Bay Trail)
	Chipset	SoC Intergrated
	System Memory	1 x 204-pin DDR3L-1333 SO-DIMM, up to 8GB
	BIOS	AMI UEFI BIOS
	Storage	1 x 2.5" 7/9.5 mm SATA HDD 1 x CFast™ or 1 x mSATA
	Watchdog Timer	255 levels, 0 to 255 sec.
	Onboard Graphics	Integrated Intel® HD Graphics
I/O Connector	4 x RS232/422/485(COM 1/2/3/4) 1 x VGA 1 x Audio (Line-out) 2 x USB 3.0 2 x USB 2.0 2 x 10/100/1000 Mbps Ethernet (Intel® i210-IT)	
TPM	N/A	
Expansion Interface	2 x PCI Express Mini Card slot	
Touchscreen	5-wire resistive touch screen	
Power Supply	9 to 36 VDC with power protection	
Power Consumption	40 W	
Dimensions (W x D x H)	377.9 x 60.7 x 309.3 mm (14.89" x 2.39" x 12.17")	
Packing Dimensions (W x D x H)	510 x 186 x 532 mm (20.09" x 7.32" x 20.95")	
Weight (net/gross)	4.2 kg (9.26 lb)/6.8 kg (14.99 lb)	
Environment	Operating temperature: -20°C to +55°C (-4°F to +131°F)	
	Relative humidity: 20% to 90% @ +40°C; non-condensing	
	Operation vibration: 1.3G, 10 to 500Hz, random for 2.5" HDD 2G, 10 to 500Hz, random for CFast™	
Certificate	CE	

* W.T.: Wide Temperature. All W.T. supported products have to be sorted by Axiomtek.

Ordering Information

GOT3156T-834	15" XGA TFT fanless touch panel computer with Intel Atom® E3827 1.75 GHz dual core processor, resistive touch screen and 9 to 36 VDC terminal block connector
(P/N:E223156108)	

* Specification and certifications are based on options and may vary.



Packing List

1 x GOT3156T-834
1 x Phoenix connector
1 x Panel mount kit

Optional Accessories

Wi-Fi	
E29R131114	Wall mount kit
50906D24000E	Adaptor 24V/120W, wire only, FSP120-AAAN3

Optional EOS Installation

WES7
WE8S
Windows® 10 IoT Enterprise

Optional OS Installation

Windows® 8.1
Windows® 7
Windows® 10

Dimensions

