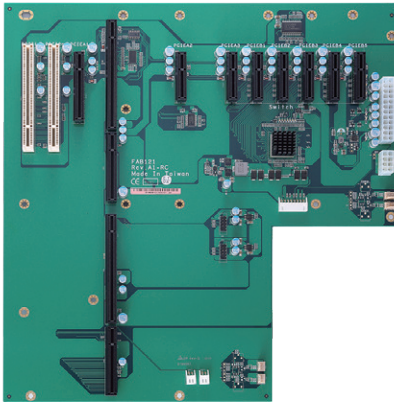


FAB121



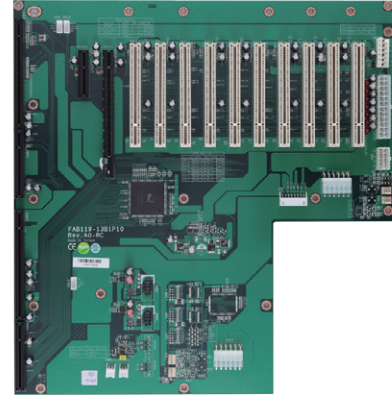
Specifications

PICMG 1.3	1
PCI	2
PCIe x8	1
PCIe x4	7

Product Description	Not Support Riser Card Slot
SHB160 with R680E	PCIe A3
SHB160 with H610E	PCIe A2 & A3

Note: The SHB160 does not support all FAB121 slots due to CPU signal bifurcation limitations on BTL-S/14th/13th/12th Gen Intel® platforms.

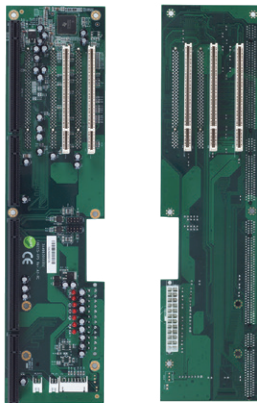
FAB119



Specifications

PICMG 1.3	1
PCI	10
PCIe x4	1
PCIe x16	1

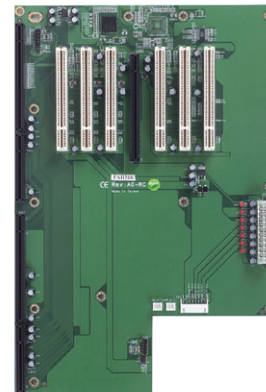
FAB205



Specifications

PICMG 1.3	1
PCI	5

FAB208



Specifications

PICMG 1.3	1
PCI	6
PCIe x16	1