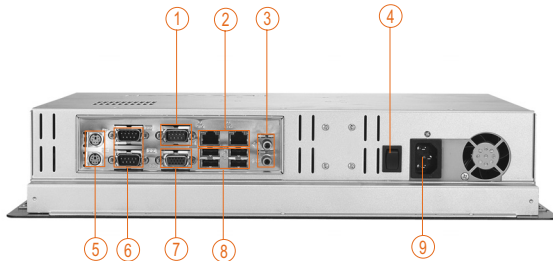
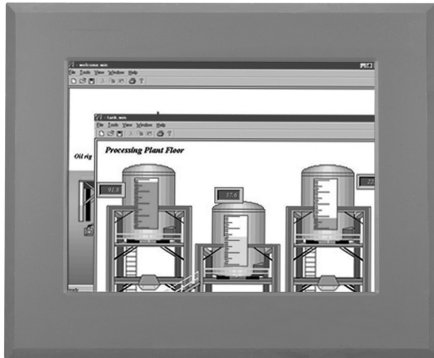


PANEL1155-807

15" TFT Slim Panel Computer for Kiosk Application



- | | |
|--------------------|----------------|
| 1. COM 3 | 6. COM 1 & 2 |
| 2. LAN (RJ-45) | 7. VGA |
| 3. Mic-in, Lin-out | 8. USB 2.0 x 4 |
| 4. Power switch | 9. AC power |
| 5. PS2 x 2 (KB/MS) | |

Features

- ▶ Supports Intel® Pentium® M or Celeron® M processor
- ▶ Supports SAW/Resistive type touch screen
- ▶ Slim design: thickness 83mm
- ▶ Various I/O ports: 4 x USB 2.0, 2 x LAN, 3 x COM
- ▶ Supports embedded O.S: Windows® CE.NET and Windows® XP Embedded
- ▶ Supports panel/wall/VESA mount



Side view

Introduction

The PANEL1155-807 is an extremely cost-effective panel computer which is applied for Kiosk application. It features Intel® Pentium® M or ULV Celeron® M processor onboard. In response to customer's requests of KIOSK applications, P1155-807 adopts the ultra slim design, thickness only 83 mm. The PANEL1155-807 also supports SAW (Surface Acoustic Wave) or resistive touch screen for different application environments.

Ultra slim design: 83 mm

The PANEL1155-807 has an ultra slim thickness of 83 mm with streamlined mechanical layout. It not only decreases maintenance time but also saves the space considerably. The PANEL1155-807 is ideal for space-limited environment.

Flexible design for touch screen

The PANEL1155-807 supports 2 types of touch screen to meet different applications. Incorporated with resistive T/S design, the PANEL1155-807 offers the most cost-effective solution. By adopting SAW (Surface Acoustic Wave) T/S design, the PANEL1155-807 provides extremely rigid platform for public environment such as Kiosk application.

Most reliable and stable design

Powered by low power Intel® Pentium® M processor, the PANEL1155-807 delivers high computing performance for applications of transportation, industrial machinery and control server.

Specifications

LCD Panel	LCD Panel	15" XGA TFT
	Brightness	260 nits
	Viewing Angle	Vertical: 100°; Horizontal: 120°
	Resolution	1024 x 768 pixels
Main System	Main Board	SBC86807
	CPU	Socket 478 for Intel® Pentium® M/ Celeron® M processor with FSB 400 MHz (PANEL1155-807) Intel® Celeron® M 600 MHz/512K processor onboard (PANEL1155FL-807)
	Chipset	Intel® 852GM+ICH4

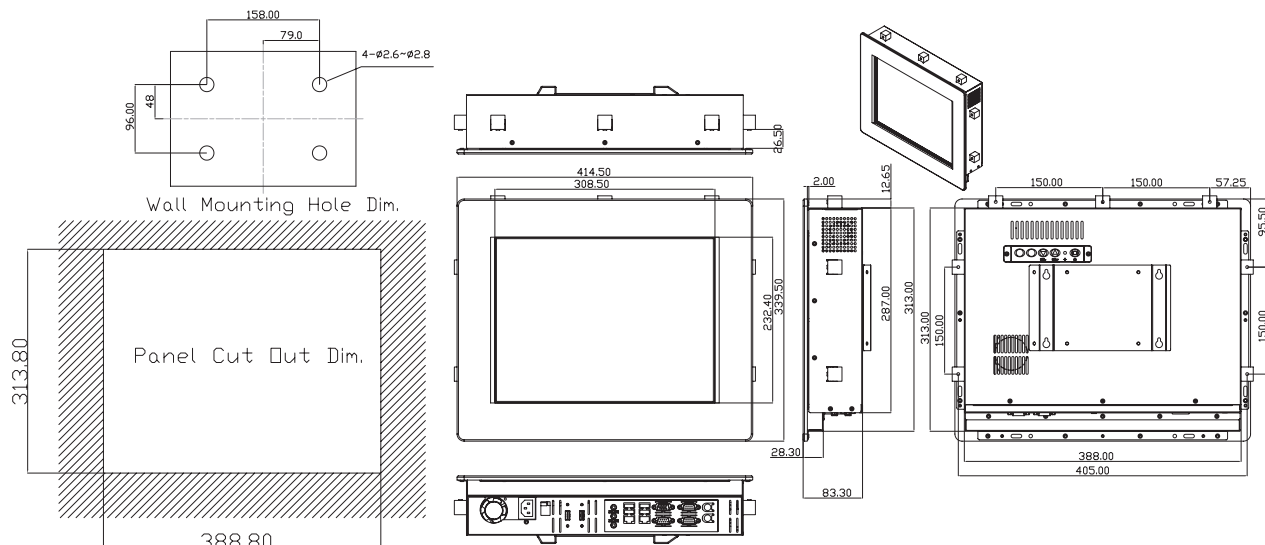
System	System Memory	1 x 184-pin DDR DIMM max. up to 1GB	
	BIOS	Award 4Mbit with RPL/PEX LAN boot ROM, SmartView and customer CMOS backup	
	SSD	CompactFlash™ Type-II socket	
	Watchdog Timer	Reset supported; 255 levels	
	Onboard Graphics	Integrated Intel® 852GM GMCH	
	PS/2 Interface	PS/2 keyboard/mouse x 2	
	Hard Disk Drive	1 x 3.5" or 1 x 2.5"	
	USB	4 x USB 2.0 compliant	
	Ethernet		1 x 10/100 Base-T with WOL
			1 x 10/100/1000 Base-T with WOL

I/O Connectors	D-sub 9-pin x 3 (male) for RS-232 P/S 2 x 2 for Keyboard and Mouse RJ-45 x 2 for Ethernet USB 2.0 connector x 4 D-sub 15-pin x 1 (female) for S-VGA output Line-out/Mic-in
Touchscreen	SAW type/resistive type
Power Supply	AC 90~230V, 180W or DC 24V, 120W
Dimensions	414.5mm (16.32") (W) x 83.3mm (3.28") (D) x 339.5mm (13.37") (H)
Weight	8.8 Kg (19.4 lb)
Certification	CE
Environmental	Operation temperature: 0°-45°C (32° -113°F) Relative humidity: 10-95%@ 40°C, non-condensing Operation vibration: 1.0G, 5~500Hz, random

Ordering Information

PANEL1155-807S	15" TFT slim panel PC with SAW touch screen
PANEL1155-807R	15" TFT slim panel PC with resistive touch screen
PANEL1155FL-807R	15" TFT fanless slim panel PC with resistive touch screen

Dimensions



Optional Accessories

E202003330	VM-101 (VESA ARM clamp type)
E202003329	VM-105 (VESA ARM wallmount)

Optional EOS Installation

Windows® XP Embedded
Windows® CE.NET

Optional OS Installation

Windows® NT/2000/XP
Linux Kernel 2.4

Medical Panel Computers

PANEL2000
Slim Client
Panel
Computers

VTA Series

GOT Fanless
Touch Panel
Computers

PANEL
1000/5000
Industrial Panel
Computers

Industrial
Workstations

PANEL6000
Industrial Flat
Panel Monitors